



Birch Creek Ranch

50
Kilometers

15
Waypoints

50
Fuel Range

Steep rocky two track.

START

43° 05.270'N
117° 03.880'W

FINISH

43° 13.813'N
117° 29.942'W

WARNING!!!

THIS ROUTE MAY BE DANGEROUS. FOLLOW THIS ROUTE AT YOUR OWN RISK.

Conditions change over time. Route leads to remote areas many miles from help. This is not a "closed" course. The route crosses and travels on public roads and highways where other vehicles, pedestrians, and animals may be present. Some hazards are identified here, for illustration purposes only, but most hazards are not identified or marked. Information provided is approximate, and should not be considered precise. Obey all laws and use caution at all times. If signs, maps, or other indicators suggest the route travels into closed, illegal, private property, or otherwise restricted areas, this roadbook should not be followed into such areas.

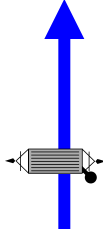
RALLY NAVIGATOR IS NOT RESPONSIBLE FOR THE ACCURACY OR SAFETY OF THIS ROUTE.

FOR PERSONAL USE ONLY

huffdan292@gmail.com

NOT FOR COMMERCIAL USE

0,00



Jordan Lodge Rd

1

0,00

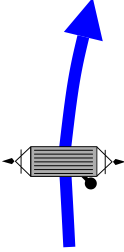
M

1

303°

43°05.270'N
117°03.880'W

12,65



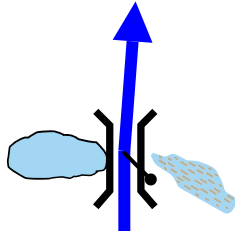
12,65

2

326°

43°05.373'N
117°12.676'W

12,88



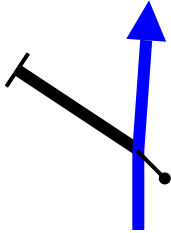
0,23

3

27°

43°05.484'N
117°12.728'W

14,09



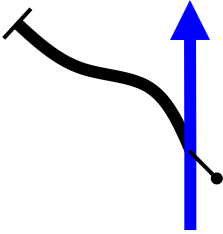
1,21

4

315°

43°05.816'N
117°13.398'W

15,08



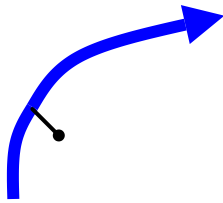
0,99

5

350°

43°06.311'N
117°13.656'W

18,04



Blowout Reservoir Rd

2

2,96

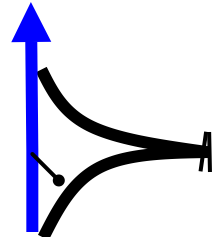
M

6

325°

43°07.388'N
117°14.590'W

33,11



15,07

7

293°

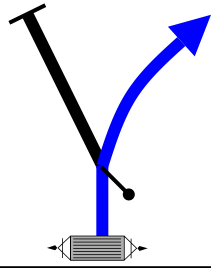
43°10.227'N
117°23.674'W

37,65

M

4,54

8



290°

Birch
Creek
Rd

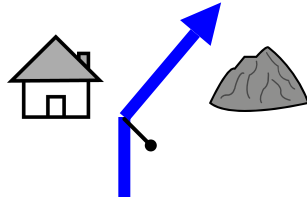
3

43°10.064'N
117°26.933'W

46,60

8,95

9



48°

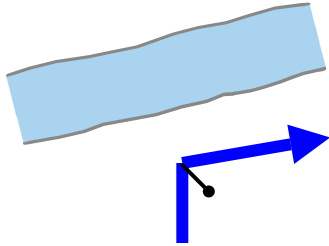
43°12.846'N
117°30.229'W

48,47

M

1,87

10



350°

Birch
Creek
Take-Out

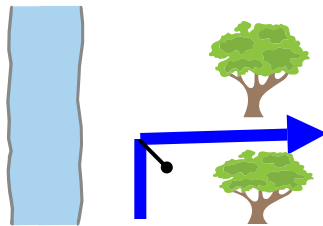
4

43°13.518'N
117°29.760'W

48,54

0,07

11



73°

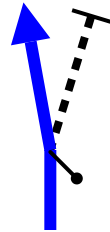
Follow road to N
end of field

43°13.555'N
117°29.770'W

49,24

0,70

12



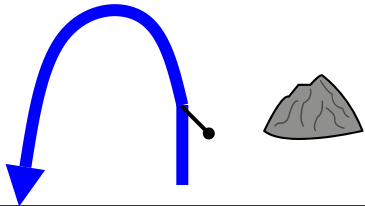
286°

43°13.826'N
117°29.829'W

49,37

0,13

13



257°

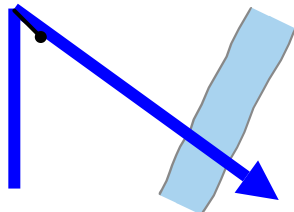
Loop
around
end of
field

43°13.866'N
117°29.896'W

49,52

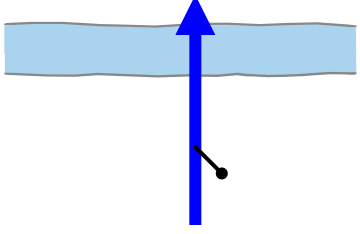
0,15

14



299°

43°13.791'N
117°29.888'W

PAGE 3	BIRCH CREEK RANCH	KM TOTAL: 50
49,60		Owyhee River Ford
0,08	M 15	299°
		5 43°13.813'N 117°29.942'W

50
Km

15
Waypoints

50 Km
Fuel Range

START
43°05.270'N
117°03.880'W

FINISH
43°13.813'N
117°29.942'W

POWERED BY



Birch Creek Ranch

WWW.RALLYNAVIGATOR.COM